



NECSEL™ NEON

RGB LASER LIGHTING SYSTEM

Version 1.0



COLORFUL & USER-FRIENDLY

The Necsel Laser Neon is a turn key system with benefits that surpass LED or lamp-based lighting. With a laser lifetime of 10+ years without failure or color shift and 10 W of white light, Laser Neon is a versatile and reliable lighting source.

FEATURES

- Quick & Easy to Install
- Long Lifetime
- Remote Delivery of Light
- Wide Neon-Like Color Range
- DMX / USB Interfaces
- Rapid Color Changing

APPLICATIONS

- Border Tubing Neon
- Hazardous Areas
- Water & Ice Lighting
- Architectural Design
- Extreme Environments
- Hard to Reach Locations

SPECIFICATIONS SUMMARY

Parameter	Min	Limits Typ	Max
Operating Power (RGB)			10 W
Temperature Range	15°C	-	30°C
Fiber- Coupling	SMA-905, 1000 μm core, 0.39 NA		

RED WAVELENGTHS

Power			5 W
Wavelength Range	635 nm	638nm	642 nm

GREEN WAVELENGTHS

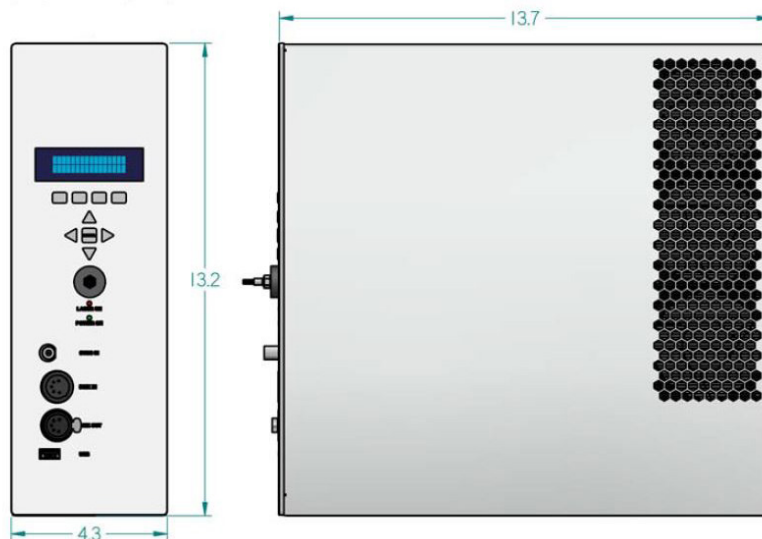
Power			2.5 W
Wavelength Range	529 nm	532 nm	534 nm

BLUE WAVELENGTHS

Power			2.5 W
Wavelength Range	460 nm	465 nm	470 nm

AC POWER REQUIREMENTS

Input Voltage	100 V	-	240 V
Input Current	3.5 A		
Input Frequency	50 Hz	-	60 Hz



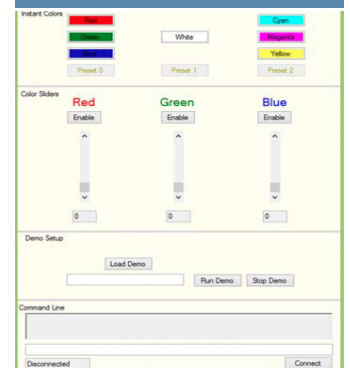
OPTIONAL ACCESSORIES



TRANSPORT FIBER



OPTIC ACCESSORIES



WINDOWS-BASED GUI