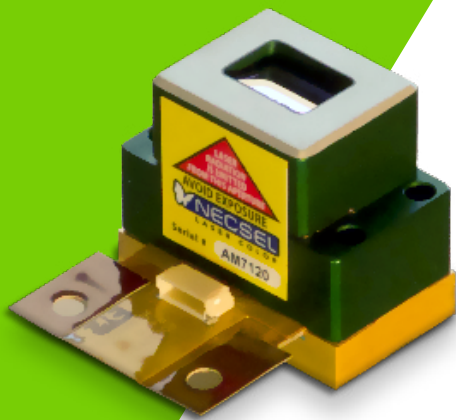




NECSEL™ GREEN

GREEN LASER ARRAY - 550 NM

Version 1.1



ENABLING & AFFORDABLE

The Necsel Green Laser uses patented technology to produce wavelengths previously unavailable in the industry. This package produces 2 W of power and is less than one cubic inch. For users who want to get started right away, combine this laser with the Necsel Green Developer's Kit.

FEATURES

- 2 W of Power*
- 30,000 hrs of Lifetime*
- Patented Technology
- Multiple Wavelengths
- Small Footprint
- Optional Fiber-Coupling
- Optional Developer's Kit

APPLICATIONS

- Remote Source Lighting
- Hazardous Lighting
- Forensics
- Scientific
- Medical
- Therapeutic

SPECIFICATIONS SUMMARY

Parameter	Min	Limits Typ	Max
Operating Power*	2.0 W		
Temperature	35°C		
Wavelength Range	549 nm	-	555 nm

RECOMMENDED DRIVE CONDITIONS

Operating Voltage	-	2.5 V	3.0 V
Operating Current*	22 A		

ARRAY SPECIFICATIONS

Number of Rows	2		
Number of Output Beams Per Row	20	-	24
Emitter Pitch Spacing	328 μm		

FIBER-COUPLING OPTIONS

Connector	SMA-905
Fiber Core Diameter	400 μm
Fiber NA	0.22 or 0.39

OPTIONAL ACCESSORIES



TRANSPORT FIBER



DEVELOPER'S KIT



FIBER-COUPLED

